

# LODDON CAMPASPE INVESTMENT PROSPECTUS

APRIL 2022



**BULOKE**  
SHIRE COUNCIL



**CITY OF GREATER  
BENDIGO**



**GANNAWARRA**  
Shire Council



**Campaspe**  
Shire Council



**CENTRAL  
GOLDFIELDS**  
SHIRE COUNCIL



**MOUNT ALEXANDER**  
SHIRE COUNCIL



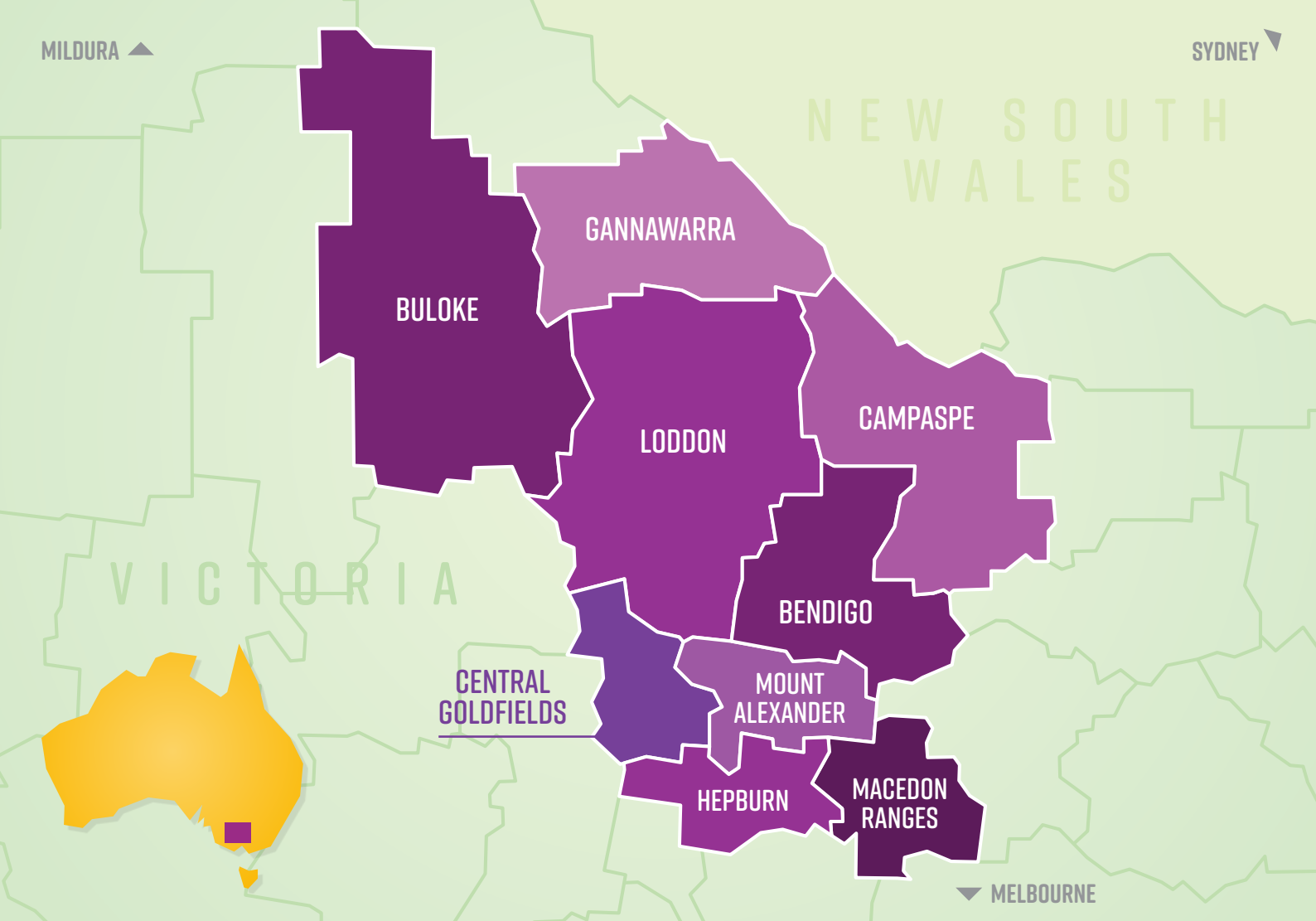
**Macedon  
Ranges**  
Shire Council



**LODDON**  
SHIRE



**Hepburn**  
SHIRE COUNCIL



## The Loddon Campaspe Group of Councils is pleased to present this investment prospectus.

It showcases a range of projects designed to respond to key opportunities and emerging issues and challenges in the municipalities of Buloke, Campaspe, Central Goldfields, Gannawarra, Greater Bendigo, Hepburn, Loddon, Macedon Ranges and Mount Alexander.

This Loddon Campaspe Group of Councils occupy a unique place in central and north-western Victoria.

Ranging from the Murray River in the state's north to the floodplains of the mid-Loddon River in the north-west and the Macedon Ranges in the south-east, the region extends from the state's extremities to within 50 kilometres of central Melbourne.

It is home to 278,000 Victorians – a figure expected to grow to more than 325,000 by 2036. Nearly half of whom reside in the urban centre of Greater Bendigo.

The region has a rich natural and built heritage, attractive towns, a pleasant climate, and social and economic diversity.

Its geographic location makes the region highly accessible to and from Melbourne and surrounding regional areas, and is an alternative to Melbourne in terms of high level service provision.

The network of larger and smaller towns, most of which connect closely to Bendigo, are central to the region's unique character.

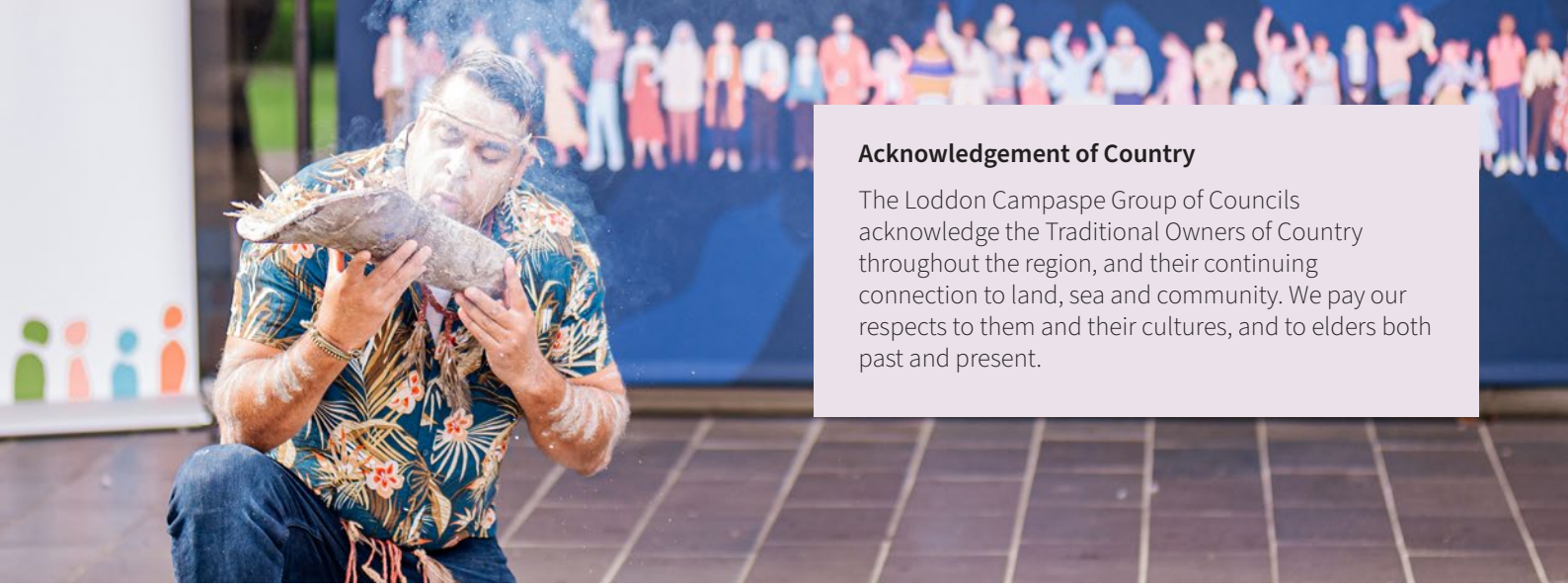
Larger centres such as Echuca, Gisborne, Kyabram, Kyneton, Castlemaine, Daylesford, Maryborough and Kerang act as district hubs to smaller surrounding settlements and rural areas, both inside and beyond the regional boundaries.

These larger centres offer a diversity of retail and community services and recreational and cultural opportunities, all of which complement those on offer in Bendigo and Melbourne.

Maryborough and Daylesford are unique as they have strong links to both Ballarat and Bendigo.

The majority of the Loddon Campaspe region is made up of rural land, a significant proportion of which is used for diverse agricultural production, with irrigated dairying, cropping and grazing in the north-east and large-scale productive cropping, dryland and mixed farming in the north-west. Wineries, orchards and olive groves feature throughout the region, with one of the world's largest single estate olive groves located near Boort. The mix of towns, farmland, forest and goldfields heritage provide an attractive landscape that draws tourists from within and outside the state.

Regional and rural Victoria are seeing significant growth, and are well positioned to continue this development given the trend of movement in response to the COVID-19 pandemic. Access to affordable housing, employment opportunities, education, health and recreational services is important and the Loddon Campaspe area can continue to accommodate the growth and movement from metro Melbourne.



### Acknowledgement of Country

The Loddon Campaspe Group of Councils acknowledge the Traditional Owners of Country throughout the region, and their continuing connection to land, sea and community. We pay our respects to them and their cultures, and to elders both past and present.

## Melbourne’s peri-urban hinterland

Peri-urban literally means the area around a settlement. Melbourne’s peri-urban region is diverse, containing a mix of people, places and experiences. This predominantly rural area includes key urban settlements and townships, which face particular pressures for growth and change. In the Loddon Mallee South region it extends across the Macedon Ranges and parts of Hepburn Shire and Mount Alexander Shire. Urban settlements likely to experience these challenges for growth and change include Gisborne, Kyneton, Castlemaine and Daylesford, and smaller settlements such as Romsey and Riddells Creek.

## Population

Over the past five years the region’s population has grown by an average of 1.35 per cent per annum or approximately 16,000.

	2020	2036 est.	
Buloke	6,101	5,015	-17.8%
Campaspe	37,675	39,084	3.7%
Central Goldfields	13,092	14,134	8.0%
Gannawarra	10,400	9,928	-4.5%
Greater Bendigo	119,980	153,759	28.2%
Hepburn	16,157	17,700	9.6%
Loddon	7,473	7,347	-1.7%
Macedon Ranges	50,971	64,643	26.8%
Mount Alexander	20,001	21,841	9.2%
<b>Total</b>	<b>281,850</b>	<b>333,451</b>	<b>18.3%</b>

This data is from the Regional Development Victoria Information Portal (sourced April 2022). The Loddon Campaspe Group of Councils await the release of the 2021 Census data to provide an updated picture of population growth across the region. Current population data does not accurately reflect the growth experienced as a result of COVID-19 and private investment that has happened in recent years, further attracting people to live and work in rural and regional communities.

## Key regional features:

- Significant tourism areas, such as the goldfields region, Murray tourism region, Macedon Ranges, Daylesford, Echuca and Bendigo
- The central role Bendigo plays in providing high level services and facilities to the Loddon Campaspe region and surrounding regions
- The location of the region within Victoria, making it highly accessible from other areas and a strong location for business
- The Calder transport corridor and other major transport corridors, which provide easy access for both passenger and freight transport
- A well-established agricultural industry, including significant irrigation infrastructure
- Environmental assets including forests, rivers, lakes and wetlands
- Gannawarra is home to Australia’s, in fact the world’s, largest integrated solar-battery farm
- The region is growing in population, the economic profile is changing and so are the means of rural production
- Significant level of cooperation and mutual support amongst the Loddon Campaspe Group of Councils

This prospectus seeks to address future challenges by helping to direct growth, while protecting and building on the region’s strengths.

In addition to the projects listed on the following page, the Loddon Campaspe Group of Councils strongly urges a concerted effort by all tiers of government to address the following:

- Continued funding with full CPI annual adjustments for Financial Assistance Grants, Roads to Recovery and Building Better Regions Fund, with a focus on financial sustainability
- Programs to address the chronic shortage of rural GPs and place-based health options
- The chronic skills gap in the Loddon Campaspe region to foster workforce development, address labour shortages and grow connection to tertiary education opportunities

# REGIONAL PROJECTS

## A connected region

Improved connectivity – digital, road, rail and energy – is a priority for long term social, economic and environmental outcomes for the people and communities of the Loddon Campaspe region.

The Loddon Campaspe Group of Councils believes all residents can benefit from a better connected region.

## DIGITAL

Digital technology and infrastructure are fundamental to the economic and social growth of regional Victoria. Digital connectivity creates opportunities and reduces barriers.

Quality digital connection is essential for businesses and households to be able to participate and engage in modern life, engage with friends and family as well as access everyday services, including health care and education. Digital connectivity reduces the need to travel and brings services to the home or business.

One of the biggest challenges facing rural and regional Victoria is access to essential services. Without access to quality NBN connections many rural and regional communities are falling behind.

Council supports the Loddon Campaspe Regional Partnership Priority Projects aimed at addressing the digital connectivity gaps.

### Request

- Continuation of mobile blackspot funding
- Rollout of very fast connectivity in the region's major centres, and the Gisborne - Bendigo - Echuca corridor
- Roll out free public Wi-Fi in the region's major and smaller centres
- Improved rural access to telehealth to reduce the health inequalities in health service access and provision



## ENERGY

The Victorian Government has made a commitment to the development of Renewable Energy Zones (REZs) to enable new renewable energy projects to be connected in a timely manner, reducing risk premiums for investors, improving energy affordability and reliability for consumers, helping to achieve climate change goals and furthering regional economic development.

Many renewable energy projects in Victoria are experiencing long and costly connection processes and/or restrictions due to a lack of thermal capacity and/or low network system strength in some REZs.

Therefore the Loddon Campaspe Group of Councils was pleased to note the 2020 decision by the Victorian and Australian Governments to jointly support the development of VNI West via KerangLink.

VNI West is a proposed new 500 kilovolt (kV) electricity transmission interconnector between Victoria and NSW. It will increase power export capacity to NSW by 1,930MW and capacity to Victoria by 1,800MW, as well as unlocking investment in over 2,000MW of renewable energy projects.

KerangLink will facilitate the development of Victorian REZs and help to bring forward significant network capacity to connect renewable energy projects in Victoria and support regional jobs.

KerangLink is due to come on line by 2027, depending on the rate of coal power decline.

### Request

The Loddon Campaspe Group of Councils urges the Australian and Victorian governments to progress the development of KerangLink as quickly as possible because of the benefits it will deliver to regional economies.

### *Alignment with Roadmap Loddon Campaspe Regional Partnerships*

A connected region – All people in the Loddon Campaspe Region benefit from economic activity and access to services.

### *Alignment with Loddon Campaspe Economic Growth Strategy*

Improved connectivity infrastructure.

# ROAD AND RAIL

Funding for key rail and road routes for safer, more efficient movement of freight and stock.

## RAIL

Current rail services are limited due to line and signalling upgrade requirements and there is a need for additional rolling stock and stations. In the Loddon-Campaspe region, rail is emerging as an intra-regional mode of transport, rather than being purely used to get to and from Melbourne. Infrastructure and services should therefore reflect this and increase commuter use and access within the region.

### Request

A two-staged package of rail improvements delivered as Bendigo Metro Rail 4 + 5, including:

- Ongoing investment and maintenance along Bendigo – Melbourne train line including line duplication between Bendigo and Kyneton facilitating more services, higher speeds and more reliability.
- New railway stations at Golden Square and Harcourt, which capitalise on the recent urban planning and renewal projects currently underway by partnerships between the City of Greater Bendigo, Mount Alexander Shire and the Victorian Government.
- Increase the number of services to underserved stations, including:
  - Between Maryborough and Ballarat;
  - Between Bendigo and Eaglehawk; and
  - Between Bendigo and Epsom (and Huntly when opened)
- Increase the number of services between Maryborough and Ballarat (separate to the Bendigo Metro Rail package)
- In the medium to longer term there is a need to repair and restore rail line between Eaglehawk and Inglewood to enable a link into the south (port) bound freight system.  
The upgrade would increase the network's capacity to deliver grain to port for export. It would allow broad gauge grain trains on the Sea Lake and Manangatang lines - the Korong Vale group of lines - a second route to Melbourne or Geelong via Inglewood, Eaglehawk and Bendigo.  
It would also open the opportunity for passenger services between the fast growing Marong township, Maiden Gully and Bendigo.
- Continued upgrade of the Echuca-Bendigo line and the Swan Hill-Bendigo line

### Project cost

New stations – \$15M each

Bendigo-Kyneton duplication – subject to designs

Funding – Australian and Victorian Governments

## ROAD

### Freight – Progress the Marong Freight Link

Marong is located 15 kilometres west of the centre of Bendigo at the junction of the Calder, Calder Alternate and Wimmera Highways where increasing traffic volumes are severely compromising the town centre.

Marong's population is projected to grow to approximately 8,000 people (currently 1,500) in the next 15-20 years. It will also be home to the Bendigo Regional Employment Precinct, situated between the Wimmera and Calder Alternative Highways and adjacent to the proposed Marong Western Freight Investigation Corridor (Marong Freight Link). This development is expected to accommodate up to 6,000 jobs.

The Calder Freeway is one of the key freight routes connecting Mildura to Melbourne. The Calder Highway was recently gazetted on the Principle Freight Network.

The proposed Marong Freight Link will service the Bendigo Regional Employment Precinct, as well as bypassing heavy vehicles from the Marong Town Centre, creating a safer and higher amenity environment for all road users and residents.

In the longer term, a new Western Link Road (Ravenswood to Epsom) is proposed to address traffic and freight issues associated with travelling through urban Bendigo. When constructed, the Link Road will provide easy and efficient access for freight vehicles, enhancing opportunities for existing, new and emerging businesses to succeed.

### Request

- Funding a study to identify, plan, design and adopt a preferred alignment for the potential Western Link Road and confirm surrounding land uses. The study would include:
  - Assessment of existing conditions
  - Development of multiple viable road alignments
  - Preparation of a Summary Planning Study for community consultation
  - Complete Planning Study
  - Planning Scheme Amendment process
  - Construct the Marong Freight Link

### Project cost

Study – \$1.5M

Construction – \$35M (estimate)

### Contributors

Australian Government

Victorian Government

City of Greater Bendigo



## KINDERGARTENS – UNIVERSAL ACCESS TO 15 HOURS

Early childhood education is the foundation for lifelong learning.

The National Partnership Agreement, with the Commonwealth guaranteeing funding of 15 hours per week for all kindergarten-aged children, expired in December 2021. A commitment for a further four years is yet to be established.

Permanent ongoing funding is needed. Without ongoing funding for universal access to early childhood education, many families will no longer be able to afford kindergarten for their children.

This impacts on children, their families and kindergarten staff, and at the same time jeopardises Australia's quality of education.

The Loddon Campaspe Group of Councils' call for continued funding of universal access to 15 hours of kindergarten reflects the Loddon Campaspe Regional Partnership's focus on early years.

### Request

Permanent ongoing funding of 15 hours per week for all kindergarten-aged children.

### *Alignment with Roadmap Loddon Campaspe Regional Partnerships*

Create the best start for every child – Families and communities that give children the best start in life.

### *Alignment with Loddon Campaspe Economic Growth Strategy*

Creating our future workforce.

## REGIONAL RESOURCE RECOVERY CENTRE AND CIRCULAR GREATER BENDIGO

In August 2017 the Victorian Government approved the Loddon Mallee Waste and Resource Recovery Implementation Plan. This plan identified the need for a regional-scale waste facility within the southern area of the region to maximise resource recovery for municipal, commercial and industrial waste.

Bendigo, the major generator of waste in the Loddon Mallee region, operates the Eaglehawk Landfill, the last remaining licenced landfill in the municipality, and the Heathcote, Strathfieldsaye and Goornong transfer stations.

The last active cell at Eaglehawk Landfill will reach capacity by the end of 2022, so alternative facilities need to be planned for, constructed and operational to replace the landfill. A location for a new regional Circular Hub needs to be identified.

Separately, the City is undertaking the 'Circular Greater Bendigo' project to manage all waste streams through a circular economy lens and to remove the need for landfill, which is in line with the Victorian Government's Recycling Victoria Policy.

### *Alignment with Roadmap Loddon Campaspe Regional Partnerships*

Our culture, heritage and environment is protected and enjoyed.

### *Alignment with Loddon Campaspe Economic Growth Strategy*

Waste and resource recovery – Seek the investment required to increase recovery and reprocessing of materials within our region.

### Project cost

#### **Total – \$29.6M (approximate)**

Australian Government – \$12.5M

Victorian Government – \$12.5M

City of Greater Bendigo (potentially other Councils) – \$4.6M

The cost breakdown is as follows:

*Eaglehawk Landfill rehabilitation* – \$7.8M

*Implementation of the Circular Greater Bendigo Project, including a regional Circular Economy Hub* – \$21.8M

## CENTRAL VICTORIAN GOLDFIELDS WORLD HERITAGE BID



This unprecedented region-wide partnership and transformational project will shine a light on the extraordinary story of the Central Victorian Goldfields, and place the region and Victoria on the world stage.

It will make our region nationally competitive during the COVID-19 recovery period, bring investment and jobs, and build stronger, diverse and more sustainable economies and communities.

Priorities delivered through the campaign's staged projects include:

- Building the bid by delivering a watertight case that proves what makes the Central Victorian Goldfields the best in the world and then securing World Heritage listing
- Strengthening the region by growing the region's local and international profile, building stakeholder capacity to deliver world class offerings and experiences, and identifying and filling investment gaps by delivering world-class product and infrastructure

Timeframe: Staged between 2022 to 2026/7, aligned to proposed World Heritage inscription

Municipalities: Ararat Rural City Council, Campaspe Shire Council, Central Goldfields Shire Council, City of Ballarat, City of Greater Bendigo, Golden Plains Shire Council, Hepburn Shire Council, Loddon Shire Council, Macedon Ranges Shire Council, Moorabool Shire Council, Mount Alexander Shire Council, Northern Grampians Shire Council, and Pyrenees Shire Council

### *Alignment with Roadmap Loddon Campaspe Regional Partnerships*

Our culture, heritage and environment is protected and enjoyed.

### *Alignment with Loddon Campaspe Economic Growth Strategy*

Prepare a strategy for the growth of international visitation, strong regional coordination of international identity.

Achieve World Heritage listing for the Central Victorian Goldfields.

Renew existing tourism attraction products.

Higher levels of tourism visitation and expenditure.

Preserve and enhance the unique character of our towns and villages.

Gear investment around visitors and residents, linking heritage restoration, urban design and town centres with tourism product development and marketing.

### **Project cost**

#### **Total – \$39.5M**

Australian Government – \$25M infrastructure development

Victorian Government – \$500,000 initial design, \$12M infrastructure development

Supporting Councils – \$125,000 initial design, \$1.875M infrastructure development

## NATURE-BASED TOURISM – TRACKS AND TRAILS

The Loddon Campaspe Group of Councils strongly supports investment in nature-based tourism including continued development of a network of tracks and trails as outlined in the Loddon Campaspe Regional Partnerships roadmap. The roadmap identifies four significant tracks and trails for further investment: Murray River Adventure Trail, Daylesford to Hanging Rock Rail Trail, Goldfields Track upgrade and the Heathcote to Murchison Trail.

Projects designed to further develop these trails in response to growing demand are outlined in this prospectus.

### *Alignment with Roadmap Loddon Campaspe Regional Partnerships*

A great environment to live – Our culture, heritage and environment is protected and enjoyed.

### *Alignment with Loddon Campaspe Economic Growth Strategy*

Develop the region's nature tourism potential.

Cohesive regional tourism products development – Renew existing tourism attraction products.





## GOVERNMENT FUNDING FOR SWIMMING POOL REFURBISHMENT

Our region has already become warmer and drier – a climate trend likely to continue into the future. The north of the region has hot summers with average maximum temperatures of 30°C and is expected to have more days of higher temperatures and extreme heat due to climate change.

Outdoor swimming pools in the Loddon Mallee region are well loved community assets, that not only provide access to learn-to-swim programs for young families, but also important community gathering places during the long hot summer and heatwaves.

The 1956 Melbourne Olympics inspired enormous interest in swimming, resulting in the construction of a network of public ‘Olympic’ swimming pools in the cities and towns of metropolitan and country Victoria. Many were constructed by returned servicemen and served as a memorial to those who served in war.

In many cases public swimming pools were established on land acquired by the local municipality rather than on existing Crown reserves, such as recreation reserves. There was an emphasis on open space.

The outdoor pools that have served Victoria so well are falling into disrepair and are in desperate need of renewal if they are to continue to serve the needs of the local community. However local municipalities lack the funds needed to extend the life of these pools. The challenge is not necessarily to build new pools but to refurbish the existing facility. There is currently limited government funding to support the refurbishment of outdoor pools.

### Request

The Loddon Campaspe Group of Councils urges Australian and Victorian governments to come together to fund a program to support refurbishment works for Victoria’s regional outdoor pools.

### *Alignment with Roadmap Loddon Campaspe Regional Partnerships*

Healthy Heart of Victoria – Active communities, healthy settings and productive lives at all stages.

### *Alignment with Loddon Campaspe Economic Growth Strategy*

Township renewal.

Preserve and enhance the unique character of our towns and villages.





### BULOKE PREMIER SPORTING FACILITY AND AQUATIC UPGRADES

The Birchip, Nullawil, Sea Lake and Wycheproof Recreation Reserve facilities are some of Buloke’s highest utilised community assets. Currently, some of these facilities do not provide female-friendly change spaces and therefore restrict current and future usage.

The upgrades will create a function space that acts as a hub for each community, create viewing spaces, improve oval lighting and improve accessibility for players, spectators and umpires.

These facilities are the heart of these communities and will increase community connectivity and participation in physical activity into the future.

With seven pools across the Shire all built between 1950 and 1970, the need for investment into Council’s aquatic facilities is significant. Upgrades to plant, pipework and pool shells are all important to ensure the pools remain accessible into the future, and value additions, such as solar heating and splash parks, are required to drive additional patronage.

#### *Alignment with Roadmap Loddon Campaspe Regional Partnerships*

Healthy Heart of Victoria – Active communities, healthy settings and productive lives at all stages.

#### *Alignment with Loddon Campaspe Economic Growth Strategy*

Township renewal.

Preserve and enhance the unique character of our towns and villages.

#### **Project cost**

**Total – \$6.5M**

Australian Government – \$5.3M

Shire of Buloke – \$1.2M

## CIVIC PRECINCT AND TOWN CENTRE UPGRADES

Building upon the now-funded streetscape developments across the larger towns of Buloke in Birchip, Charlton, Donald, Sea Lake and Wycheproof, this project will implement upgrades to town centres, streetscapes and parks across the smaller towns of Berriwillock, Culgoa, Nandaly, Nullawil and Watchem.

This project also includes the implementation of the Birchip Civic Precinct Project and expansion of the town park and improving green space in that community.

### *Alignment with Roadmap Loddon Campaspe Regional Partnerships*

A great environment to live – Our culture, heritage and environment is protected and enjoyed.

A growing economy – A strong diverse economy that enables people to actively contribute to their community.

### *Alignment with Loddon Campaspe Economic Growth Strategy*

Township renewal.

Preserve and enhance the unique character of our towns and villages.

### **Project cost**

**Total – \$4.4M**

Australian Government – \$4M

Shire of Buloke – \$400,000

## GREENING BULOKE

Over a five-year period, the Buloke community aims to significantly improve its sustainability performance and provide a more liveable community for residents and tourists.

The aim of this project is to have a network of electric vehicle charging stations that ensure ease of visitation, to improve tree canopy cover and provide an appealing and cooler township, and to retrofit key community facilities, such as sporting clubs, with environmentally sustainable design features.

Council has worked closely with the Central Victorian Greenhouse Alliance to identify priority locations for electric vehicle charging points and tree canopy deficiencies. In addition, facility audits in conjunction with Sustainability Victoria have highlighted opportunities to address energy and water reduction in our heavily utilised community assets.

### *Alignment with Roadmap Loddon Campaspe Regional Partnerships*

A great environment to live – Our culture, heritage and environment is protected and enjoyed.

### *Alignment with Loddon Campaspe Economic Growth Strategy*

Preserve and enhance the unique character of our towns and villages.

### **Project cost**

**Total – \$2.5M**

Australian Government – \$500,000 per year over five years

Shire of Buloke – Project management (in-kind)



## VICTORIA PARK REVITALISATION

Victoria Park is a key regional recreation space. The construction of the second Echuca Moama bridge necessitates the redesign of the space to suit sporting and recreation users.

The Victoria Park Master Plan will:

- Replace the existing ageing infrastructure with a multi-use pavilion
- Upgrade internal informal paths to improve safety and strengthen pedestrian linkages along the Murray River
- Improve picnic and viewing facilities and amenities
- Improve the protection of important historic elements
- Improve boat launching and trailer parking facilities
- Upgrade playing surfaces and car parking
- Provide for events, including Southern 80 Ski Race, sporting carnivals and concerts

The redesign will provide pedestrian and cycling links from Echuca West to Moama. The trails proposed in the Victoria Park Master Plan will extend these opportunities into the natural bush reserve.

Council is seeking Australian Government support for detailed design and staged implementation of the Victoria Park Master Plan.

### *Alignment with Roadmap Loddon Campaspe Regional Partnerships*

Healthy Heart of Victoria – Active communities, healthy settings and productive lives at all stages.

### *Alignment with Loddon Campaspe Economic Growth Strategy*

Township renewal.

Preserve and enhance the unique character of our towns and villages.

Cohesive regional tourism products development – Renew existing tourism attraction products.

### **Project Cost**

#### **Total – \$9M**

Australian Government – \$6M

Shire of Campaspe – \$3M

## CONNECTING COMMUNITIES – IMPROVING WALKING AND CYCLING LINKAGES



Echuca's walking and cycling network is fragmented and disconnected. The Active Transport and Open Space strategies have highlighted this as a key barrier.

Compared to other modes, active transport is cheap and allows communities to enjoy our many open spaces. Physical activity helps communities feel better physically and mentally, allowing people to connect and engage with their community, no matter their circumstances.

The remaining connections are needed to take full advantage of the existing infrastructure. Those connections are:

- Port of Echuca to Victoria Park
- Port of Echuca to Echuca East Recreation Reserve
- Echuca East Recreation Reserve to Echuca South (Campaspe Esp River Walk)
- East – West pedestrian rail crossing

Funding is sought to support detailed design of the project.

### *Alignment with Roadmap Loddon Campaspe Regional Partnerships*

A great environment to live – Our culture, heritage and environment is protected and enjoyed.

### *Alignment with Loddon Campaspe Economic Growth Strategy*

Develop the region's nature tourism potential.

Cohesive regional tourism products development – Renew existing tourism attraction products.

### **Project Cost**

#### **Total – \$625,000 (detailed design only)**

Australian Government – \$500,000

Shire of Campaspe – \$125,000

## CIVIC PRECINCT DEVELOPMENT



Funding is sought to support place-making activities in the centre of Maryborough, including detailed design and implementation of key upgrades to key civic anchor sites around central Maryborough.

Integrating this precinct through public realm improvements will facilitate a sense of place and stimulate private sector investment in the retail, tourism, hospitality and services sectors. While the fine heritage architecture of the Post Office, Supreme Court and Town Hall buildings create a space that can be reimagined as a civic square or open plaza in the European tradition.

Integrated urban infrastructure treatments will invite pedestrians to explore the nearby Central Goldfields Art Gallery and the High Street retail area, as well as provide a strong connection to the Hospital precinct. Further staged works along the Nolan Street spine will draw visitors from the newly activated Maryborough Railway Station into this civic and retail area, integrating the Resource Centre, Phillips Gardens and Paramount Theatre area into a unified town core.

A pathway connection could also be installed between Princes Park and the unified town core to integrate this highly valued recreational space.

### ***Alignment with Roadmap Loddon Campaspe Regional Partnerships***

A growing economy – A strong diverse economy that enables people to actively contribute to their community.

A great environment to live – Our culture, heritage and environment is protected and enjoyed.

### ***Alignment with Loddon Campaspe Economic Growth Strategy***

Township renewal.

Cohesive regional tourism products development – Renew existing tourism attraction products.

### **Project Cost**

**Total – \$2.5M**

Australian Government – \$2.5M

Shire of Central Goldfields – \$250,000-\$300,000 project management (in-kind)

## INDUSTRIAL PRECINCT DEVELOPMENT

Funding is sought to support the delivery of a small lot industrial precinct in Central Goldfields Shire, including detailed design work, a development plan, subdivision, site clean-up and infrastructure provision.

The recently adopted Industrial Land Supply and Demand Assessment and Strategy has identified the need for small lot industrial sites. A large (18 hectare) Council-owned site zoned Industrial 1 is available for this use. The land is level and largely cleared, and only a small portion of it is needed for future depot use by Council.

A Development Plan and subdivision of the site would provide seven to 10 years' supply of small lot industrial development. Based on this supply scenario, it is estimated that at least 300 ongoing local jobs would be created.

### ***Alignment with Roadmap Loddon Campaspe Regional Partnerships***

A growing economy – A strong diverse economy that enables people to actively contribute to their community.

### ***Alignment with Loddon Campaspe Economic Growth Strategy***

Attract new business investment.

Expand current government support given to private businesses that wish to expand.

Land use planning to support appropriate growth.

Provision of adequate industrial and employment land to support growth of regional industry, including manufacturing, construction and logistics.

### **Project Cost**

**Total – \$2-3M**

Australian Government – \$2-3M

Shire of Central Goldfields – \$250,000-\$300,000 project management (in-kind)

## KEELY INDUSTRIAL ESTATE

Council is seeking to develop the next stage of Keely Industrial Estate in Cohuna to maintain a supply of industrial land to support demand for new business development.

The fast-growing local economy is diversifying with interest in dairy processing, feed milling and manufacturing set to create increased local demand. Keely Estate will require new civil infrastructure such as roads and drainage, power, water and sewer. With around 50 jobs already generated, the next stage is expected to create an additional 50 to 60 local jobs.

The project will complete the construction of the Industrial Estate and open the remaining 12 lots to local businesses.

### *Alignment with Roadmap Loddon Campaspe Regional Partnerships*

A growing economy – A strong diverse economy that enables people to actively contribute to their community.

### *Alignment with Loddon Campaspe Economic Growth Strategy*

Attract new business investment.

Expand current government support given to private businesses that wish to expand.

Land use planning to support appropriate growth.

Provision of adequate industrial and employment land to support growth of regional industry, including manufacturing, construction and logistics.

### **Project Cost**

#### **Total – \$2M**

Australian Government – \$1.8M

Shire of Gannawarra – \$200,000

## KERANG – KOONDROOK RAIL TRAIL

The Kerang to Koondrook Rail Trail is a 22km multi-sport adventure trail following the old Kerang Koondrook railway.

The trail links directly to the world class Murray River Adventure. It connects travellers to the RAMSAR-listed waterways, forests and cultural sites.

It will be a unique experience showcasing cultural and historic aspects of the local area while growing the very strong nature-based tourism product.

Walking, cycling, e-bikes and horse-riding feature in the trail with creative landscaping and environmental experiences linked to the Murray River and Kerang wetlands.

### *Alignment with Roadmap Loddon Campaspe Regional Partnerships*

A great environment to live – Our culture, heritage and environment is protected and enjoyed.

### *Alignment with Loddon Campaspe Economic Growth Strategy*

Develop the region's nature tourism potential.

### **Project Cost**

#### **Total – \$4.8M**

Australian Government – \$4.4M

Shire of Gannawarra – \$400,000





## BENDIGO REGIONAL EMPLOYMENT PRECINCT

The manufacturing and mining sectors are responsible for half of Greater Bendigo's total exports to more than 50 countries around the world, valued at approximately \$2B per annum. Gold mining, defence equipment, transportation, engineering and advanced engineering, and food manufacturing are industries that have flourished with a highly skilled workforce.

An industrial precinct is essential and urgent to support central Victoria's growing advanced manufacturing sector. The Bendigo Regional Employment Precinct will provide a long-term pipeline of industrial land to meet growing industry needs and will secure jobs close to a growing residential population.

It will also reduce land use conflicts and take freight movements out of central Bendigo.

The City has negotiated the purchase of land that will need to be rezoned from Farming to Industrial. When this is complete, infrastructure and utility connections on the site will be necessary.

### Cost breakdown for stage 1

Project element Investment

Trunk infrastructure works – \$15M

Water and sewer – \$10M

Transport – \$10M

Additional subdivision roads and internal infrastructure cost – \$13M

Freight route planning – \$1.5M

**Total cost, stage 1 – \$49.5M**

An additional \$40M is required to support Marong's residential and industrial growth, in particular water infrastructure. Major upgrades will be required to potable water and wastewater infrastructure (both trunk mains and treatment plants).

These works are critical to the sustainable growth of the Bendigo western growth corridor, with the Bendigo Regional Employment Precinct being a significant trigger for increased capacity in these essential services.

### *Alignment with Roadmap Loddon Campaspe Regional Partnerships*

Theme – A strong diverse economy.

### *Alignment with Loddon Campaspe Economic Growth Strategy*

Attract new business investment – Expand current government support given to private businesses that wish to expand.

Land use planning to support appropriate growth – Provision of adequate industrial and employment land to support growth.

of regional industry, including manufacturing, construction and logistics.

Regional city infrastructure investment – Ensure regional investment in infrastructure responds to residents, business and visitor needs, including Bendigo Airport, business land, cultural assets and Bendigo 'metro rail'.

### **Total project cost, stage 1**

**Total – \$49.5M**

Australian Government – \$11.5M

Victorian Government – \$38M

City of Greater Bendigo – Land purchase

Additional \$40M for water infrastructure, including strategic planning work (suggested even cost shared between Victorian and Australian governments)



## BENDIGO ART GALLERY EXPANSION

The success of Bendigo Art Gallery has caused it to outgrow its current facilities.

The Gallery is renowned for hosting large-scale international blockbuster exhibitions that are a significant tourism drawcard and have many positive flow-on effects to tourism, accommodation and hospitality sectors and our economy more broadly.

These exhibitions include *Elvis: Direct from Graceland*, *Mary Quant: Fashion Revolutionary*, *Bendigo Art Gallery and Twentieth Century Fox present Marilyn Monroe and Grace Kelly: Style Icon*. Over the past 10 years the Gallery has averaged 150,000 visitors a year, but this number has been in excess of 200,000 when major exhibitions have been staged.

A redevelopment of the entire site will deliver a multi-storey building that enhances the capacity for major exhibitions and visitor attraction, and creates new engagement and public spaces for the regional community including:

- 600m<sup>2</sup> new world-class learning centre for regional students, families and community
- Traditional Owner recognition via landscaping and Place of Keeping for the Dja Dja Wurrung collection
- Large, second level blockbuster exhibition space

- Redeveloped restaurant with a City of Gastronomy offering
- Expanded access to free and collection-based exhibitions and displays
- Expanded commercial opportunities via a Gallery shop and pop up blockbuster exhibition shop
- Accessible amenities and expanded public spaces

### ***Alignment with Roadmap Loddon Campaspe Regional Partnerships***

A great environment to live – Our culture, heritage and environment is protected and enjoyed.

### ***Alignment with Loddon Campaspe Economic Growth Strategy***

Cohesive regional tourism products development – Renew existing tourism attraction products.

### **Project cost**

#### **Total – \$25M**

Australian/Victorian governments – \$18M (shared cost)

City of Greater Bendigo – \$3M

Bendigo Art Gallery Board – \$2.5M

Philanthropic – \$1.5M

## INSTITUTE OF GASTRONOMY

This exciting project involves the new construction of a flagship regional facility that will act as a hub and catalyst to support the transformation of the good food economy.

The facility will comprise of infrastructure to support cutting edge and innovative educational and good food outcomes, including lecture theatres, offices, student accommodation, kitchens, boning rooms, incubator spaces, food storage and a host of other facilities for culinary and agricultural education all fitted with world-class, specialised equipment.

The new institute, supported by William Angliss TAFE, will enable collaboration between education, agriculture, food production and hospitality in the region. The Institute of Gastronomy and Good Food initial business case was completed in 2018 and funded in partnership with William Angliss Institute, the Victorian Government and Regional Development Australia (Grampians).

### *Alignment with Roadmap Loddon Campaspe Regional Partnerships*

A growing economy – A strong diverse economy that enables people to actively contribute to their community.

Healthy Heart of Victoria – Active communities, healthy settings and productive lives at all stages.

A great environment to live – Our culture, heritage and environment is protected and enjoyed.

### *Alignment with Loddon Campaspe Economic Growth Strategy*

Linking industry, education and employees.

Expanded tertiary education and research investment.

Develop the region's reputation as a food and artisan destination.

Grow international engagement.

### **Project cost**

#### **Total – \$25M (estimated)**

Australian Government – \$12.5M

Private philanthropic – \$12.5M

Shire of Hepburn – \$250,000 in-kind support





# SHIRES OF HEPBURN AND MACEDON RANGES (JOINT PROJECT)



## DAYLESFORD-HANGING ROCK RAIL TRAIL

Building on the region’s wellness brand, the Rail Trail will encourage visitors to unwind and explore the region’s unique offering of dramatic scenery, food, wine, and health and wellness activities based around local tourism opportunities. Passing through beautiful landscapes the trail, along the former Karlsruhe-Daylesford railway, will offer a variety of quality visitor experiences only an hour from Melbourne Airport and accessible by public transport.

The significant increase in visitors using the trail will provide huge opportunities for existing and new businesses, including farmgate produce sales. The Daylesford to Hanging Rock Rail Trail builds on the existing plans to develop the Woodend to Riddells Creek Shared Trail currently being delivered by Macedon Ranges Shire Council.

The Daylesford to Hanging Rock planning project will undertake significant stakeholder consultation and design required to progress the project to construction. This work will add to and complement the early planning already undertaken by Macedon Ranges Shire for the Tylden to Hanging Rock portion of the Rail Trail.

### *Alignment with Roadmap Loddon Campaspe Regional Partnerships*

A great environment to live – Our culture, heritage and environment is protected and enjoyed.

### *Alignment with Loddon Campaspe Economic Growth Strategy*

Develop the region’s nature tourism potential.

### Hepburn Shire Council component

- Daylesford Trailhead
- Daylesford to Bullarto – 9.5km
- Bullarto to Trentham – 9km
- Trentham to Tylden – 8km

### Macedon Ranges Component

- Tylden to Old Karlsruhe Station – 9.2km
- Old Karlsruhe Station to Woodend – 10km
- Old Karlsruhe Station to Kyneton – 6km
- Woodend to Hanging Rock – 12km

	Planning	Construction	Total
<b>Australian Government</b>		\$20M	\$20M
<b>Victorian Government</b>	\$6M	\$10M	\$16M
<b>Macedon Ranges Shire Council</b>	\$550,000	\$1.255M	\$1.805M
<b>Hepburn Shire Council</b>	\$550,000	\$1.255M	\$1.805M
	<b>\$7.1M</b>	<b>\$32.51M</b>	<b>\$39.61M</b>

### Note:

- Cost estimates subject to Council budget considerations and agreements with Australian and Victorian governments
- Independent of this project, Hepburn Shire Council is considering an extension of the Daylesford Spa Country Rail Line from Bullarto to Trentham

## MACEDON RANGES REGIONAL SPORTS PRECINCT – STAGE 2

The Macedon Ranges Regional Sports Precinct will deliver a 15-hectare regional park providing facilities for a range of sport and passive recreation activities, enabling improved social connections and health outcomes for the growing Macedon Ranges community.

The precinct masterplan has been taken to schematic design, although funding constraints mean that the precinct needs to be delivered in stages. Stage 1 is fully funded and will deliver a three-court sports hub, a natural turf oval and sports pavilion, passive recreation facilities, landscaping and associated infrastructure.

Stage 2 will deliver three additional sports hub courts, a function room, additional car parking, a practice oval, outdoor multi-sport courts, additional sports pavilion amenities and further landscaping.

### *Alignment with Roadmap Loddon Campaspe Regional Partnerships*

Healthy Heart of Victoria – Active communities, healthy settings and productive lives at all stages

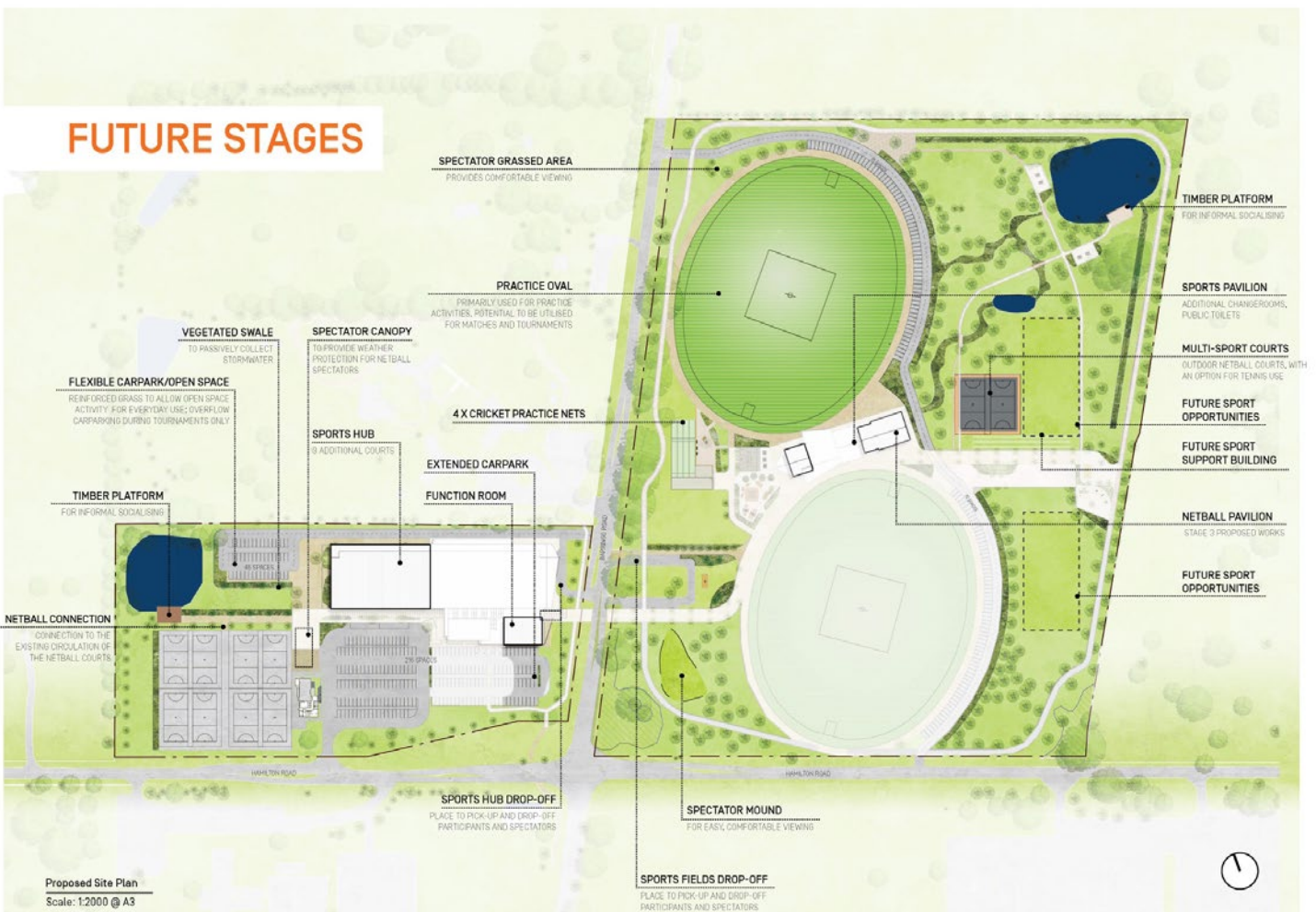
### **Project cost (Stage 2)**

**Total – \$21M**

Australian Government – \$15M

Victorian Government – \$5M

Shire of Macedon Ranges – \$1M (subject to approval)



## BRIDGEWATER AND INGLEWOOD STREETScape IMPROVEMENTS

Council is currently planning for the upgrade of streetscapes at Bridgewater and Inglewood. This work would support delivery of these priority town streetscape improvements. Works would include improved links and vistas to natural attractions, heritage and tourism promotion opportunities. This would be achieved by formalising movement of cars, parking, pedestrians and aesthetic improvements with landscaping. Safe, vibrant and attractive streetscapes such as this will further support the liveability of Loddon Shire and support community growth and prosperity.

### Project cost

#### Total – \$4M

Victorian Government – \$3M

Loddon Shire Council – \$1M (\$500,000 each, Bridgewater and Inglewood)

## NEWBRIDGE RETICULATED SEWER AND WATER

Introduction of potable water and reticulated sewerage for Newbridge. The 2021 business case recommends:

- Sewerage: a standard, gravity-fed system which is then pumped to a new small-scale local treatment plant. This service would be provided to the township zone west of the Loddon River.
- Water supply: a gravity-fed piped supply from the neighbouring town of Tarnagulla, part of the Laanecoorie system. The Laanecoorie WTP has spare capacity and has recently been upgraded to improve treated water quality and reliability. Water supply would be provided to both east and west parts of Newbridge.

This project would remove a significant barrier to further growth and development of the Newbridge township, which is strategically located 19 minutes from the Bendigo Regional Employment Precinct in Marong, connected via the Wimmera Highway and 38km from the Bendigo city centre. With regional population growth and existing township expansion opportunities, this project supports environmental protection of the Loddon River, population growth, business development and liveability.

### Project Cost

#### Total – \$5.77M

Government – \$5.55

Landowners – \$220,000

## RURAL CHILDCARE MODEL



Council has produced a Childcare Feasibility Business Case, which identifies a model that would allow the development of viable, reliable and sustainable long day care options in small rural communities. The model includes a rural rate subsidy, a start-up service guarantee period of five years, and has identified infrastructure upgrades needed for two initial pilot sites in Inglewood and Boort. Base-level Australian Government funding for this project would be at the new rural rate at 120% of the current childcare hourly rate

### Project cost

#### Yet to be determined

Australian Government – Base-level funding for between 12 and 20 attendees for five years. Funding Childcare Establishment Officer position – place-based position, three-year term (\$120,000 per year)

Victorian Government – \$1.5M-\$2M to support infrastructure needed to host kindergarten/ childcare at two pilot sites - Boort and Inglewood

Shire of Loddon – \$110,000 for employment of a Childcare Project Officer (one-off fixed term position) to support the ongoing work to fund working childcare model

## MOUNT ALEXANDER HEALTH AND WELLBEING HUB



The Health and Wellbeing Precinct Project will see the integration of a wide range of mental and physical health and wellbeing services at one location for the community. It will include access to allied health services and an indoor aquatic facility integrated with hospital facilities and services.

Provision of health and wellbeing services in the Shire is currently split across a number of locations and organisations. Consolidating these health services will result in a reduction of overheads enabling greater investment in resourcing more services and infrastructure for the community.

It will also enable the attraction of new businesses and services to the region.

### *Alignment with Roadmap Loddon Campaspe Regional Partnerships*

Healthy Heart of Victoria – Active communities, healthy settings and productive lives at all stages.

### *Alignment with Loddon Campaspe Economic Growth Strategy*

A world class health sector.

### **Project cost**

**Total – \$150M**

Australian Government – \$40M

Victorian Government – \$100M

Shire of Mount Alexander – \$10M

## IMPROVING DIGITAL ACCESS, INCLUSION AND LITERACY

A high-speed business broadband solution for Castlemaine, with the provision of enterprise broadband and business-from-home broadband via fixed wireless technology and free public Wi-Fi, where applicable.

### *Alignment with Roadmap Loddon Campaspe Regional Partnerships*

A growing economy – A strong diverse economy that enables people to actively contribute to their community.

A connected region – All people in the Loddon Campaspe Region benefit from economic activity and access to services.

### *Alignment with Loddon Campaspe Economic Growth Strategy*

Improved connectivity infrastructure.

### **Project cost**

**Total – \$2M**

Australian Government – \$1.9M

Shire of Mount Alexander – \$100,000